

## ScanMaster – DATA MANAGEMENT



### High volume scan and imaging data management

- User-friendly
- Completely customisable
- Mass 3D pointcloud acquisition and manipulation
- Simple and effective registration
- Compatible with many data formats

**It's time.**

**S**canMaster is the GLS-1000 control and data processing software. It copes easily with mass 3D data and is designed to be operator friendly for data acquisition and manipulation.

Features include easy registration using tie-points and traverse routines, live video feed and a powerful set of data abstraction functions including meshing, contouring, creating CAD elements from points and allowing simple interfacing into 3rd party software via extensive export options and plug-ins.

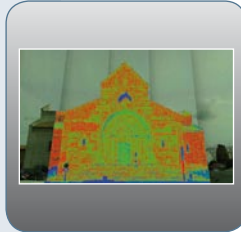
A modern streamlined user interface means that you will be up and running with your deliverables almost as soon as you return to the office or even whilst you are still in the field! Common tasks are designed and implemented to be quick and easy to use, minimizing the learning curve while best reflecting your technical capabilities and expertise. With ScanMaster, Topcon let the users skills shine through.



ScanMaster uses the latest software technology to ensure that working with your project is quick and that the full power of your PC is used efficiently to manipulate your data to achieve the results you need. The database structure is optimized for the visual work environment, and given the quality of the data you will be working with this truly means that "What you see is what you get".



## ScanMaster – effective and simple data processing



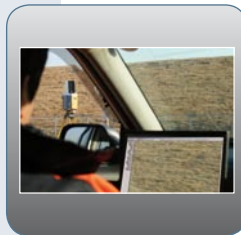
### Designed for you

The GLS-1000's ScanMaster software is designed for the way you work, developed by experienced scanner operators and optimized with all the features you'll need. Features include: Scanning control, 3D visualization, registration and simple modeling tools.



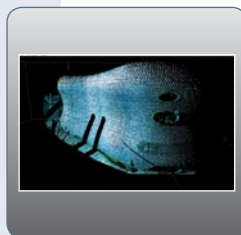
### Supports all communication with the GLS-1000

The ScanMaster software offers you two solutions for working with data from the GLS-1000. In the field if you choose not to capitalize on the instrument's standalone operation you can control the scanner by either cable (USB) or WiFi and visualize your data collection in real time.



### Use your work style

ScanMaster is a fully user-customizable software which can be setup to best reflect your chosen working procedures. The software can be used solely to manage your data ready for export into 3rd party modeling packages, or the tools implemented allow the creation of contours, surfaces, sections, points and polylines.



### Efficient and transgressive

You can export scan data in a wide variety of file formats for superior compatibility. At the very basic level the minimum that ScanMaster software offers is the control and registration of pointclouds, but with the use of the existing surveying and modelling tools it is a modern software that simplifies a traditionally difficult process.

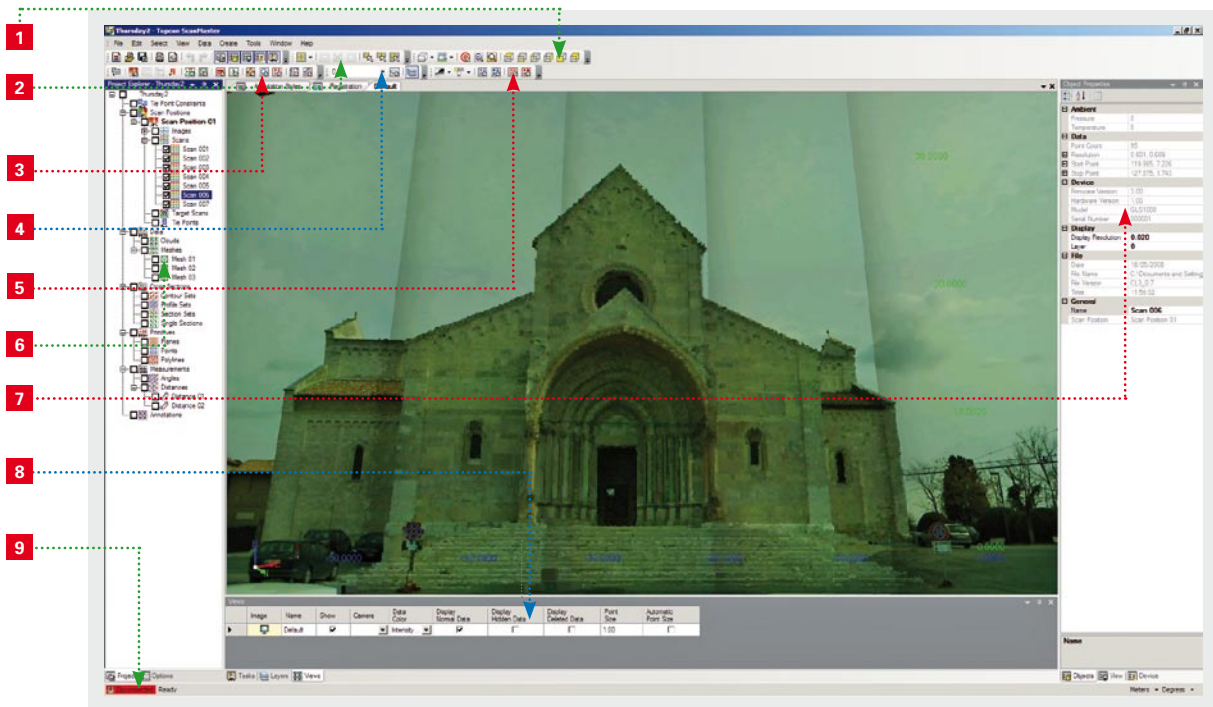
### Modern, powerful, effective

Separate the data from the noise. ScanMaster is not only optimised for the Laserscanner office workflow, it has been designed to be fast, efficient and easy to use providing you with all the right tools designed the right way.



## ScanMaster – Scan data management and processing software

Simple, quick, effective pointcloud processing



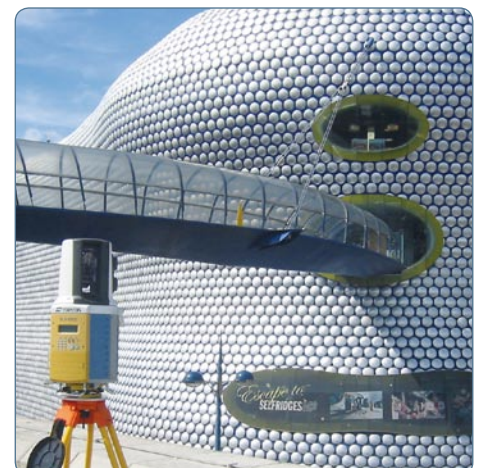
- |  |                                  |  |
|--|----------------------------------|--|
| <b>1</b> Effective navigation tools          | <b>4</b> Layer management        | <b>7</b> Specific object information             |
| <b>2</b> Functional point selection          | <b>5</b> Simple point view tools | <b>8</b> Data collection and view management     |
| <b>3</b> Data measurement and analysis tools | <b>6</b> Easy project navigation | <b>9</b> Clean and quick communication interface |

### Live Video Feed

When connected to the scanner the live video feed lets you control the instrument in the field. The ultimate quality control, watch your data streaming into your project.

### Modern Design

Everything from the interfaces to the database that is the power house of the software is utilising modern programming methods to ensure that your time can be spent working on the data, not waiting for a render.



**It's time.**

**The Leader in Positioning Technology...**

Topcon offers positioning products that deliver unparalleled site-wide performance and integration. Topcon's history of technological advances and our reputation for superior reliability means there's no other company positioned to provide you with a better "Total Positioning Solution."

From survey to inspection Topcon, through our dealer network, provides the innovative technology that gives surveyors, civil engineers, contractors, equipment owners and operators the competitive edge by addressing such critical issues as increasing profits, quality craftsmanship, improving productivity, lowering operating costs, and enhancing job site safety.

Full positioning integration field-to-finish: That's the goal of Topcon. When it's time for you to step up to the next level, it's time to turn to Topcon.



**The Leader in Customer Satisfaction...**

To ensure that your Topcon instrument maintains peak performance, your local Topcon dealer offers factory trained and certified service technicians. If service isn't available in your area, our European Service Center offers a repair and return policy second to none.



Specifications subject to change without notice  
©2009 Topcon Corporation. All rights reserved. 04/2009

**Product Features**

Product Features	
<b>SCAN VIEW</b>	
Viewing tools	Orbit, swivel, pan, zoom
Mutiple view windows	Save and restore user defined views
Scan data rendering	Colour by elevation, image, layer, range, intensity, grayscale
Scan segmentation tools	Slice, hide, delete
Control level of detail	Optimise point display for model volume
Visual aids	Axes, bounds, grid, legend
Save screen shots	Immediately document the project
<b>SCAN CONTROL</b>	
Set atmospheric parameters	Reflect true measurement environment
Set scan area	Rectangular Framing
Set scan resolution	Point, distance, angle
Set image resolution	Optimize Image Capture to suit your work style
Display live video	Quick and effective navigation in real time
Measure targets	View Target Scan in real time
Manage device tasks	Queue tasks
Quick and Effective Registration	Tie-points · OCC/BS
<b>REGISTER</b>	
Simple Registration Procedures	Tie point constraints · OCC/BS · Bundle adjust registration · Geo reference data · Report registration accuracy
<b>SURVEY</b>	
Data Extraction Tools	Draw points and linework · Extract measurement · Create annotations · Assign feature codes · Manage layers
<b>MODEL</b>	
Effective 3D Modelling	Generate TIN · Extract data from TIN (Contours, sections, profiles)
<b>IMPORT/EXPORT</b>	
Data format	Topcon point clouds · ASCII, PTS, PTX, DXF, DWG, TN3
<b>SYSTEM REQUIREMENTS</b>	
PC	2 Ghz Processor · 1 GB of RAM · Discreet video card with 128 MB of memory and with full support for DirectX9.0c, vertex and pixel shaders v2.0
Communications	802.11g Wi-Fi adapter · USB 2.0 port



Your local authorised Topcon distributor is:

grafit-werbeagentur.de